

# Town of Appleton Land Cover

**LEGEND**

- State roads
- Town roads
- - - Private roads
- Perennial streams
- Water

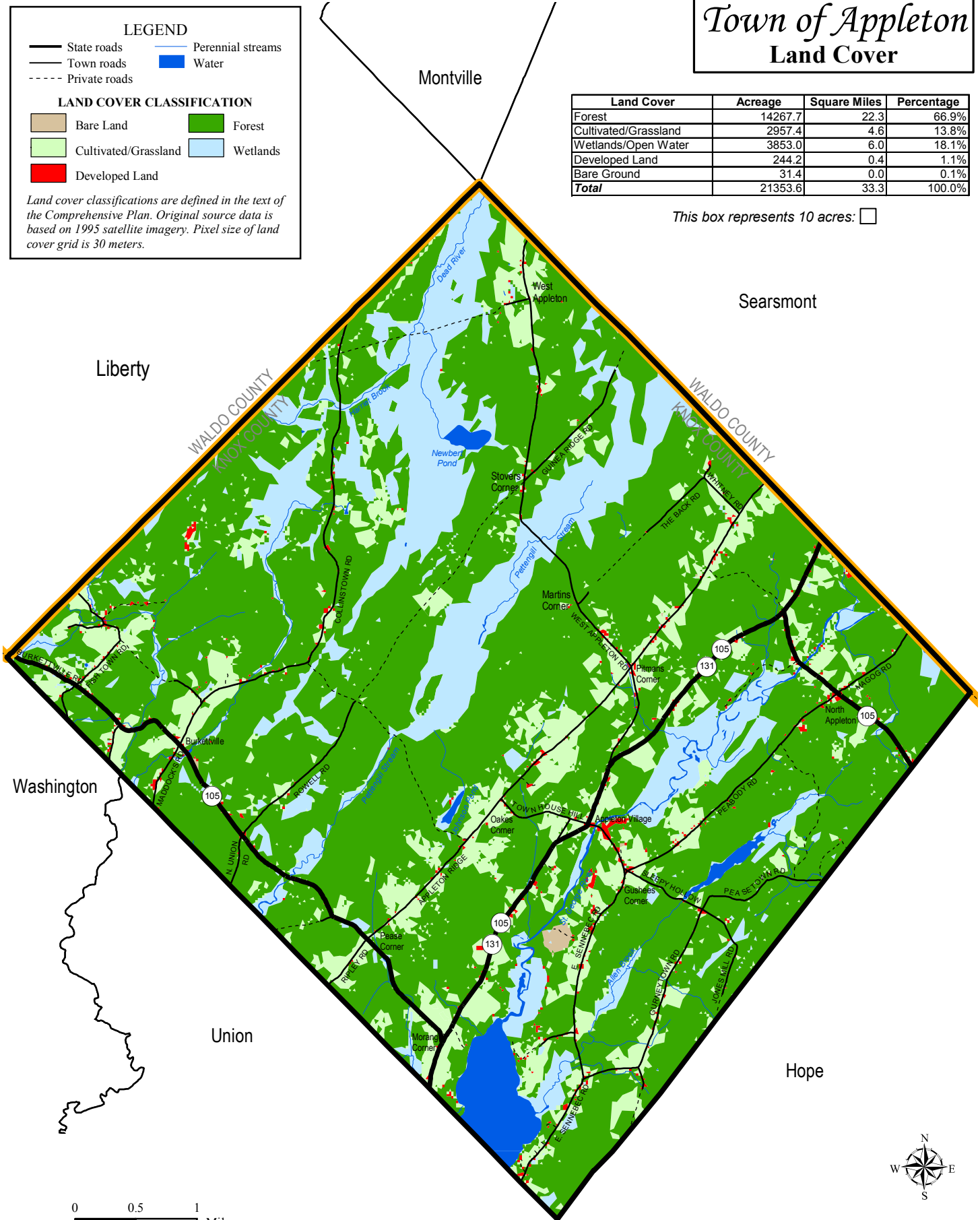
**LAND COVER CLASSIFICATION**

- Bare Land
- Forest
- Cultivated/Grassland
- Wetlands
- Developed Land

*Land cover classifications are defined in the text of the Comprehensive Plan. Original source data is based on 1995 satellite imagery. Pixel size of land cover grid is 30 meters.*

Land Cover	Acreage	Square Miles	Percentage
Forest	14267.7	22.3	66.9%
Cultivated/Grassland	2957.4	4.6	13.8%
Wetlands/Open Water	3853.0	6.0	18.1%
Developed Land	244.2	0.4	1.1%
Bare Ground	31.4	0.0	0.1%
<b>Total</b>	<b>21353.6</b>	<b>33.3</b>	<b>100.0%</b>

This box represents 10 acres:



Sources: GOMLC7 Land Cover and Wetlands of the Gulf of Maine (1995). U.S. Fish & Wildlife Service, Gulf of Maine Program and MEGIS  
Map revised: August, 2004

Mid-Coast Regional Planning Commission (MCRPC)  
Eastern Maine Development Corporation (EMDC)

www.midcoastplanning.org ~ www.emdc.org  
(207) 594-2299 ~ (207) 942-6389

See map disclaimer at end of the Executive Summary.